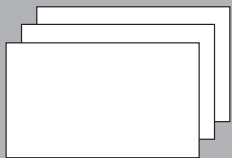


EGGER Advanced Structural Flooring System - Lifetime Guarantee

We are so confident in the quality and performance of our boards, adhesive and fitting method, that when all 3 are used in combination together we can provide customers with a unique lifetime guarantee.

1 Select the correct EGGER board for your project from the EGGER Advanced Range.



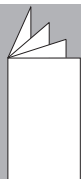
+

2 Use in conjunction with EGGER Joint & Joist D4 Adhesive.



+

3 Fit in accordance with this Fitting Guide.



=

THE EGGER ADVANCED
Lifetime Guarantee
PERFORMANCE PROMISE

Enjoy the peace of mind that comes from knowing the finished floor is covered by our unique lifetime guarantee*

* For terms and conditions and further information on the EGGER Advanced Lifetime Guarantee please visit www.egger.co.uk/lifetime

BUILDING PRODUCTS HOTLINE

For product, technical advice or general information:

T 0845 602 4444 (charged at local rate)
From R.O.I. please call: T +44 1434 613304
Or email us: building.uk@egger.com

ONLINE TECHNICAL SUPPORT

Visit our website for product and technical information on the following: COSHH data, data sheets, fitting guides, certificates and test reports. www.egger.co.uk/building



View fitting videos here
http://www.egger.com/uk_en/afsf-videos.htm

EN_268488_01/15
Subject to technical modifications and amendments.

EGGER (UK) Limited
Anick Grange Road
Hexham, Northumberland
NE46 4JS
United Kingdom

MORE FROM WOOD.

EGGER

The **EGGER**
ADVANCED
Structural Flooring System
Fitting guide

www.egger.co.uk

EGGER Advanced Structural Flooring System - Fitting Benefits

Faster installations with fewer stoppages

- A quick, straight forward system that's easy to use with less room for errors or mistakes.
- Floors can be installed even in light rain conditions and left exposed to the elements for up to 42 days once laid (except EGGER P5).

Save Costs

- New EGGER Joint & Joist D4 Adhesive offers 15% more coverage.
- No need to use Joint sealing tapes to cover board joints.
- No requirement for expensive tools or applicator guns.

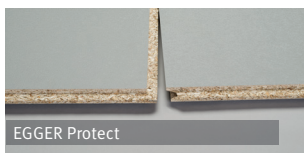
Fewer call backs and issues after handover

- Developed to vastly reduce squeaks associated with fully nailed floors.
- Comes with a lifetime guarantee when applied correctly using EGGER Boards and Joint & Joist D4 Adhesive.

Stronger, better floors

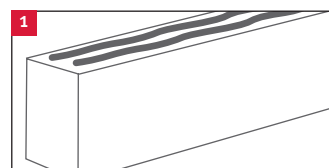
- New EGGER Joint & Joist D4 Adhesive is up to 5 × stronger than a nailed fixing.
- Manufactured using diamond tipped tooling to ensure tight, highly consistent tongue & groove joints.

The EGGER Advanced Range

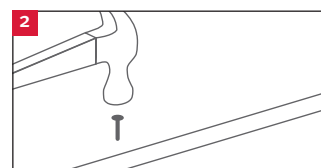


EGGER Advanced Structural Flooring System Fitting Method

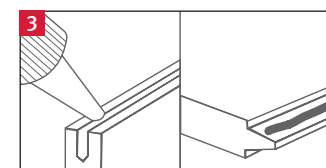
Suitable for use with Solid Timber Joists and Engineered Joists, it is advisable to follow joist manufacturers recommendations in conjunction with fitting EGGER Flooring Grade Chipboard.



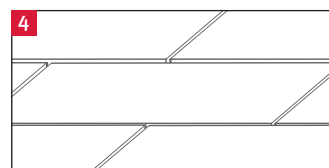
Apply two parallel and liberal beads of EGGER Joint & Joist D4 Adhesive to the top of the joist along the first row of boards.



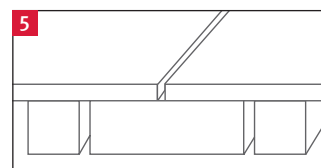
Lay the boards across the joist and fix the first row of boards with only one nail per joist from the board edge using an annular ring shank nail 2.5 times the board thickness.



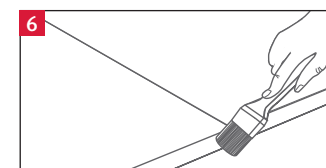
Apply a liberal amount of EGGER Joint & Joist D4 Adhesive directly to the groove and shoulder of the profile joint, extending down the length of each board to ensure that the entire joint is bonded once the boards are butted tightly together. Adhesive is likely foam out of the board joint - this will enhance the protection of the joint. Excess Adhesive should be left to dry and can be removed with a scraper.



Apply EGGER Joint & Joist D4 Adhesive along the next row of joists and stagger the next row of panels by approximately half a board to form a brick bond laying pattern. Repeat steps (excluding step 2) and note that care should be taken when walking on newly laid boards.



All short end joints should always fall on the centre of a secured joist including perimeter edges. Where this is not the case refer to NHBC guidelines.



Seal any exposed nail heads perimeter edges, cut edges and stairwells using EGGER Joint & Joist D4 Adhesive.

Joist Centres - On joists up to 450 mm centres, 18 mm or 22 mm panels may be used, but on joists up to 600 mm centres 22 mm panels must be used.

Expansion Provision - An expansion gap of 10 mm or 2 mm per meter run of floor, whichever is greater, should be left against all walls. For floors which are in excess of 10 meters long e.g. corridors, intermediate movement gaps (minimum 10 mm) should be incorporated.

For Mechanical Fixings - Flat-headed annular grooved or ring shank nails should be used, please refer to the table below.

Board thickness	18 mm	22 mm
Minimum Fixing Length	50 mm	55 mm
Minimum Fixing Diameter	2.8 mm	3.5 mm

Adhesive Coverage

For bonding the board to the joist and within the tongue & groove joint: Minimum 1 bottle of EGGER Joint & Joist Adhesive per 7 boards (2400 mm × 600 mm).

Colour

Adhesive colour is for identification purposes only and colour may change with prolonged exposure.



ONLINE TECHNICAL SUPPORT
www.egger.co.uk/building



BUILDING PRODUCTS HOTLINE
T 0845 602 4444 (charged at local rate)