

Making the timber engineering easier

easi-joists® are parallel chord trusses using stress-graded timber chords, plated together with Wolf Systems' patented, precision-engineered metal webs, EP 1 985 774 A1 – the strongest available on the market.

easi-joist® offers unrivalled lightness, strength and greater clear span ability.

Developed by Wolf Systems, initially as a total floor solution, the **easi-joist®** system offers excellent versatility when designing floors, roofs, or walls.

Every **easi-joist®** project is individually designed by licensed manufacturers to meet the requirements of national standards and client specification.



Strong, lightweight

a great alternative to standard carcassing joists and I-beams



Easy to design and install

no heavy timbers or steel supports



Long clear spans

for flexible, column-free internal space



Open web construction

for easy internal routing of services

Discover how **easi-joist®** can benefit your next project

Contact the licensed **easi-joist®** manufacturer listed below.

Alternatively find your closest manufacturer on the Wolf Systems website or Trussmate App.



Wolf Systems, Engineering Ease.

Shilton Industrial Estate, Shilton, Coventry CV7 9QL

Tel: 02476 602303

Email: info@wolfsystem.co.uk

www: www.wolfsystem.co.uk



Manufactured and supplied by:



Wolf Systems, Engineering Ease.

easi-joist®

The stronger, lightweight, easy-to-work-with metal web floor, roof and wall system



easi-joist® floors

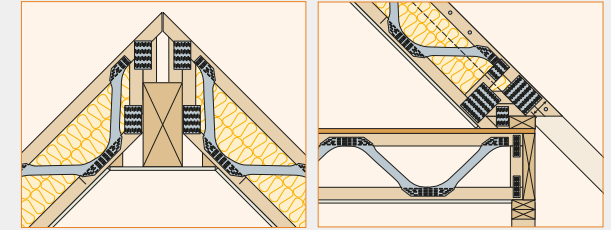
easi-joist® floors have complete flexibility to accommodate pipes, cables and services in the floor zone without the need to drill and notch joists.

- Excellent spanning and load-bearing capacity
- Meets Robust Detail requirements for timber frame construction EFT-3
- Lighter and easier to handle than solid timber joists
- Manufactured using stress-graded and kiln-dried timber to reduce shrinkage and prevent squeaky floors
- Joists are individually engineered for specific projects
- High acoustic and fire performance standards benefit party floor construction within multi-occupancy buildings

easi-rafter® roofs

easi-rafters® are easier to manoeuvre and safer to handle on site than traditional heavy timbers.

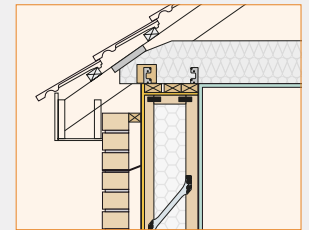
- Can easily be adapted to create pitched roof structures as a lighter, more thermally efficient alternative to solid sawn timber
- By redesigning the end column configuration, the easi-rafter® system can be installed onto a wallplate or ridge beam without the need for a bevelled wallplate or special metalwork item



easi-panel® walls

The easi-panel® system comprises open web studs assembled from strength-graded timber flanges, plated together with precision-engineered metal webs.

- Combines the lightness of timber with the structural qualities of metal
- Structurally efficient wall stud system
- More thermally efficient than conventional wall systems
- Precision-engineered for easier installation
- Accurate factory manufactured whole wall assembly dramatically reduces build times
- Can be factory-treated with preservative to meet regulatory requirements



Easy access for services

No drilling, cutting or notching required

